



Victoria Road Primary School

Working together for a bright future

STOP THE PRESS!!

We know that data can be boring to look at, but we encourage you to look at the data below and read through the explanations. Victoria Road Primary School is really kicking goals and we are proud to share these snap shots that indicate how well we are doing as a school community.





Working together for a bright future



Student Academic Data

Top 2 bands refers to children who have achieved results 6 months or above expected levels for their age. The children from our school who are in the top 2 bands are recorded in orange. Compare their results against that of similar schools, schools in our local network and the state of Victoria.

Top 2 band students in 2022 (%) ⓘ

For students in Year 3, Grammar and Punctuation

70%

Your school

46%

Similar schools

54%

Network

54%

State

Top 2 band students in 2022 (%) ⓘ

For students in Year 5, Reading

44%

Your school

38%

Similar schools

41%

Network

44%

State

Top 2 band students in 2022 (%) ⓘ

For students in Year 5, Grammar and Punctuation

36%

Your school

25%

Similar schools

26%

Network

32%

State

Top 2 band students in 2022 (%) ⓘ

For students in Year 5, Spelling

45%

Your school

27%

Similar schools

31%

Network

37%

State

Student Academic Data cont.

PAT - Students by achievement bands

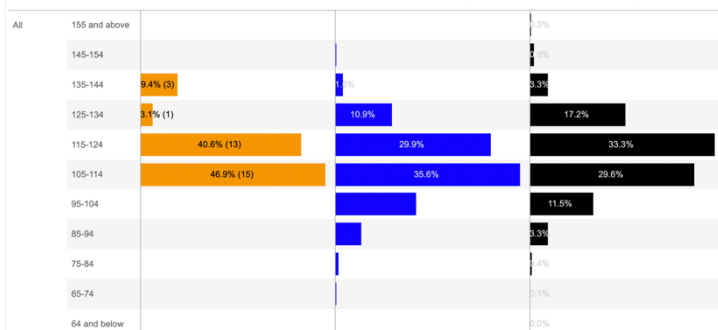
Students by achievement band (%) in Term 4, 2022

For students in Year 3 PAT Maths

Your school: 32 results

Same SFOE schools: 6,369 results

All schools: 34,918 results



PAT - Students by achievement bands

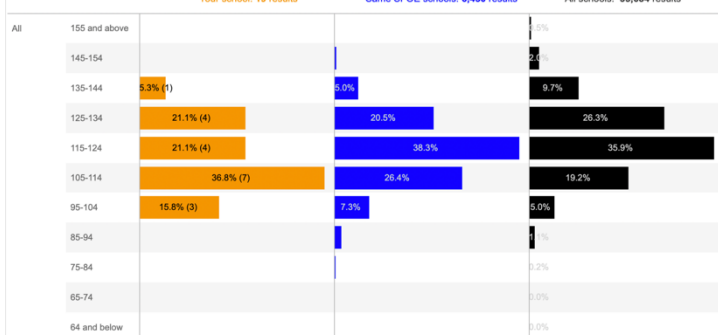
Students by achievement band (%) in Term 4, 2022

For students in Year 4 PAT Maths

Your school: 19 results

Same SFOE schools: 6,450 results

All schools: 35,684 results



PAT - Students by achievement bands

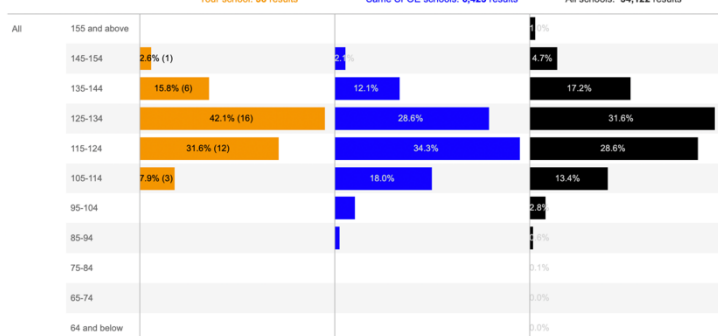
Students by achievement band (%) in Term 4, 2022

For students in Year 5 PAT Maths

Your school: 38 results

Same SFOE schools: 6,423 results

All schools: 34,122 results



PAT - Students by achievement bands

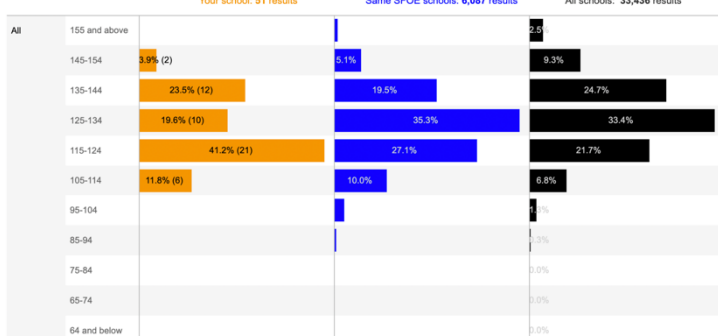
Students by achievement band (%) in Term 4, 2022

For students in Year 6 PAT Maths

Your school: 51 results

Same SFOE schools: 6,087 results

All schools: 33,436 results



PAT (Progress Achievement Tests) are conducted across the state. Our student results are indicated in orange. Note that on all tests we do not have as many children performing in the lower levels as similar schools and schools across the state. We also have more children achieving results at the top end of the scale.





Working together for a bright future



Student opinion data is collected across the state in the Attitudes to School Survey every year. Our student results are in orange, they have demonstrated outstanding responses to questions about a wide range of questions about their educational experience in our school. They feel cared for in their school and know they have trustworthy adults at school they can ask for help. They see Victoria Road as a stimulating place to learn and are fully aware of the dispositions of a great learner.

Percentage Endorsement in 2022 (%)

Stimulated learning for students in Years 4 to 6

83%

Your school

76%

Similar schools

75%

Network

78%

State

Percentage Endorsement in 2022 (%)

Perseverance for students in Years 4 to 6

80%

Your school

73%

Similar schools

73%

Network

75%

State

Percentage of students with 5 or more days in 2022 (%)

Physical activity for students in Years 4 to 6

74%

Your school

65%

Similar schools

69%

Network

68%

State

Student Opinion Data cont.

Percentage Endorsement in 2022 (%)

Advocate at school for students in Years 4 to 6

91%

Your school

87%

Similar schools

85%

Network

86%

State

Percentage Endorsement in 2022 (%)

Respect for diversity for students in Years 4 to 6

85%

Your school

78%

Similar schools

79%

Network

79%

State

Percentage Endorsement in 2022 (%)

Advocate at school for students in Years 4 to 6

91%

Your school

87%

Similar schools

85%

Network

86%

State

Percentage Endorsement in 2022 (%)

School stage transitions (Y7 and New Students) for students in Years 4 to 6

90%

Your school

74%

Similar schools

78%

Network

76%

State

Percentage Endorsement in 2022 (%)

Sense of connectedness for students in Years 4 to 6

80%

Your school

75%

Similar schools

76%

Network

78%

State

Percentage Endorsement in 2022 (%)

Student voice and agency for students in Years 4 to 6

72%

Your school

64%

Similar schools

63%

Network

65%

State

Percentage Endorsement in 2022 (%)

Effective classroom behaviour for students in Years 4 to 6

84%

Your school

76%

Similar schools

78%

Network

77%

State

Percentage of students who find it easy or very easy to seek help in 2022 (%)

Help seeking for students in Years 4 to 6

69%

Your school

61%

Similar schools

65%

Network

64%

State



Working together for a bright future

Staff Opinion Data



Staff opinion data is collected across the state in the Staff Opinion Survey. Our staff results are in orange and reflect the continual improvement taking place over time at Victoria Road Primary School. Our collaborative approach and high level professional learning has benefitted our teachers, students and the overall thinking and learning culture at VRPS.

Endorsement in 2022 (%) ⓘ

Collective focus on student learning for all respondents

92%

Your school

86%

Similar schools

87%

Network

86%

State

Endorsement in 2022 (%) ⓘ

Collective responsibility for all respondents

94%

Your school

86%

Similar schools

87%

Network

86%

State

Endorsement in 2022 (%) ⓘ

Intellectual Stimulation for all respondents

91%

Your school

77%

Similar schools

70%

Network

77%

State

Endorsement in 2022 (%) ⓘ

Monitor effectiveness using data for all respondents

100%

Your school

85%

Similar schools

89%

Network

85%

State

Staff Opinion Data cont.

Endorsement in 2022 (%) ⓘ

Use evidence to inform teaching practice for all respondents

100%

Your school

89%

Similar schools

90%

Network

89%

State

Endorsement in 2022 (%) ⓘ

Believe student engagement is key to learning for all respondents

100%

Your school

91%

Similar schools

95%

Network

93%

State

Endorsement in 2022 (%) ⓘ

Promote student ownership of learning goals for all respondents

100%

Your school

80%

Similar schools

86%

Network

79%

State

Endorsement in 2022 (%) ⓘ

Support growth and learning of whole student for all respondents

100%

Your school

84%

Similar schools

89%

Network

85%

State

Endorsement in 2022 (%) ⓘ

Collaborate to plan curriculum for all respondents

100%

Your school

90%

Similar schools

90%

Network

89%

State

Endorsement in 2022 (%) ⓘ

Believe peer feedback improves practice for all respondents

93%

Your school

75%

Similar schools

74%

Network

74%

State

Endorsement in 2022 (%) ⓘ

Interest in improving practice for all respondents

100%

Your school

89%

Similar schools

92%

Network

89%

State

Endorsement in 2022 (%) ⓘ

School Support for Staff Physical Safety for all respondents

96%

Your school

77%

Similar schools

68%

Network

78%

State



Working together for a bright future



Parent Opinion Data

Parent opinion data is collected across the state in the Parent Satisfaction Survey. Our parents report that they are very satisfied with the direction our school is taking and our child centred approach to teaching and learning. Communication from the school, leadership and teachers is appreciated and clear. Parents feel the school environment at Victoria Road is safe, nurturing and a stimulating place to learn.

Percentage Endorsement in 2022(%) ⓘ

For Parent community engagement - School communication

93%

Your school

77%

Similar schools

83%

Network

81%

State

Percentage Endorsement in 2022(%) ⓘ

For Connection and progression - Student connectedness

94%

Your school

85%

Similar schools

90%

Network

89%

State

Percentage Endorsement in 2022(%) ⓘ

For Safety - Promoting positive behaviour

94%

Your school

81%

Similar schools

86%

Network

85%

State

Percentage Endorsement in 2022(%) ⓘ

For School ethos and environment - School pride and confidence

97%

Your school

81%

Similar schools

86%

Network

83%

State